



# DEKO HG Fire

Fire Classified Floor Glass





## Fire Classified Floor Glass

Today maximum utilisation of natural light is recognised as beneficial to general well-being and is a key consideration in the design and construction of new buildings or the refurbishment of existing buildings.

DEKO HG Fire floor glass makes it possible to transfer daylight to the storeys below, introducing light to parts of the building where this was not previously possible.

In addition to the obvious benefits of increased utilisation of natural light, the glass can also be a decorative element in a solid floor structure.

### Glass and structure

In order to meet the statutory requirements for fire resistance and loading capacity, DEKO HG Fire's fire rated glazed elements are fitted on a matching fireproof steel structure built into the existing floor.

The structure is designed and developed with fire resistant spacer joints which allow length and building site tolerances to be absorbed.

The glazed elements and the steel structure are tailored individually to each project. The glazed elements in sizes up to approximately 2 sqm are either fitted as single glazed elements or as several elements in line with each other supported by the L- and T-profiles of the steel structure.

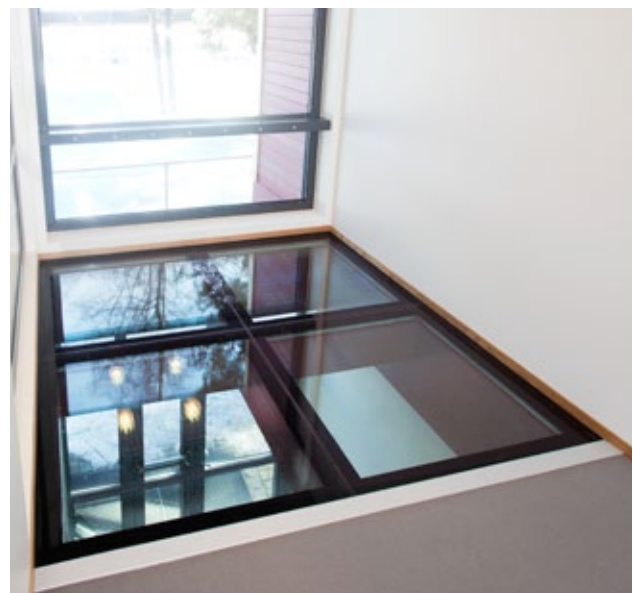
DEKO HG Fire structure has been tested and approved by The Danish Institute of Fire and Security Technology (DBI) in accordance with Eurocode norms with a maximum load of 5 kN/m<sup>2</sup>, and the entire structure including the glass is classified as 1 (B) 1 personal safety glass.

### Fire and sound

DEKO HG Fire has been approved as both REI 30 and REI 60 structures, but can, if required, be made of laminated glass without fire classification.

DEKO HG Fire structure provides a high sound reduction of approximately Rw 55 dB.

Due to its high loading capacity, fire classification and sound reduction, DEKO HG Fire can be used everywhere in all company types and in the public sector, such as in institutions, schools and hospitals.





### Decoration

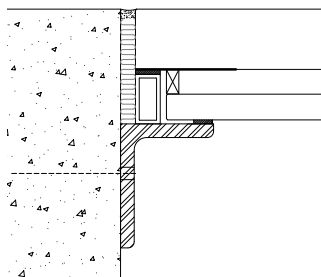
As standard floor glass is supplied with a border of black graphics to conceal the perimeter steel framework.

Large glazed areas provide a minimalist and exclusive look where light penetrates the floor glass.

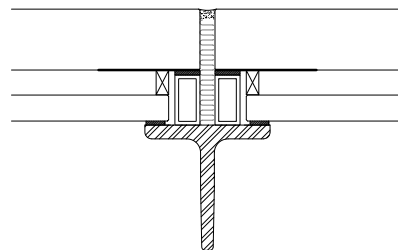
For safety reasons, the glazed elements can be supplied with anti-slip film in various patterns and colours across the entire surface.

If additional decoration or effects are required, the glass is suitable for the application of film which minimises the view from the storey below.

## Examples of DEKO FG Fire details



Edge connections



T-joints

## Type Summary

Glass thickness (mm)	Layers of glass (number)	Weight (kg/sqm)	Air borne sound insulation (Rw)	Fire resistance (min)
70-90 <sup>1</sup>	2	175-225 <sup>1</sup>	55 dB	REI 30/REI 60

1) Depending on the size of the glazed elements



DEKO partitions Ltd was established in 1970 and presently has approximately 300 employees. DEKO is the leading producer of demountable, glazed, and folding partitions in Scandinavia and distributes its product range to more than 40 countries worldwide including Europe, Africa, and Asia in co-operation with established local distributors.



DEKO partitions Ltd  
Maarkaervej 11  
DK-2630 Taastrup - Denmark

Tel: +45 43 55 77 11  
Fax: +45 43 55 77 13

[info@deko.com](mailto:info@deko.com) – [www.deko.com](http://www.deko.com)